



CANAAN
CONSTRUCTION



COMPANY **PROFILE**
Committed to solid and superior construction



TABLE OF CONTENTS

COMPANY NAME	3
CORPORATE IDENTITY	4
INTRODUCTION	6
1. About us	6
2. Company history	9
3. Milestones	10
COMPANY OVERVIEW	
1. Vision, Mission & Values	12
2. Business objectives	15
3. Our Services	16
4. Our Market	19
5. Facilities	20
6. Organization's structure	22
6.1. Expertise:	
6.2. Professional consultants and partners	
6.3. Office and administrative personnel	
7. Why choose us?	24
THE PORTFOLIO	27



THE COMPANY NAME

Canaan Construction company is a subsidiary of the **Canaan Group of companies**, founded in 1991 in Eritrea but opened an office in October 2006 in South Sudan. We are a large company focused on integrated design, Engineering & Construction, disciplines of Civil Construction, Infrastructure, Roads and bridges, Water & Power, Mechanical, Electrical & Plumbing (MAP), Renovation, Operation & Maintenance work.

Our brand name, **Canaan Construction Company** is derived from a composition of two words i.e Canaan and Construction. The blend signifies our desire and commitment in providing the best possible construction expertise and services to ensure cost effective and successful projects.

Canaan refers to the biblical promised land that is believed to be a prosperous, blessed, and abundant place.

Canaan refers to the biblical promised land which is a prosperous, blessed and abundant place. The company was developed solely to be fully immersed in various facets of **Construction** in Africa and utilize innovative building construction and renovation skills. This was all with the intention to change and improve the way projects are designed, managed and built. In a nutshell, the name signifies devotion to deliver construction fit for tomorrow's world.

CANAAN CONSTRUCTION CORPORATE IDENTITY



CANAAN
CONSTRUCTION

Our Logo:

This identity symbol stands as our visual expression of our commitment to our values and norms. The mark is designed using triangular graphic elements that are constructed to give an impression of modern structure that is unique, beautiful and evokes confidence. The icon is made complete with three letter Cs that stand for Canaan Construction Company. The three letters merge together to form a single bigger letter C.

Our Tagline:

The phrase *"Committed to solid and superior construction."* evokes an image of our brand as well as our smart approach to all our services. It encompasses our vision and what we stand for.

Our colours:

Our brand colours are referred to as Canaan **Green** and Canaan **Blue**. The Green symbolizes our energy, radiance, leadership and passion to achieve our goals while the Blue being a serene colour, signifies our integrity, stability and commitment to service and delivery.

THE INTRODUCTION

ABOUT US

Canaan Construction Company (CCC) was established in October 2006 in South Sudan to cater to the growing demand for infrastructure, construction and development in the market. CCC has successfully accomplished demanding and challenging construction projects in South Sudan. The services offered by CCC are number one in providing construction and civil engineering services and supplies of construction materials to the Government, UN Agencies & Other NGOS. CCC is also a vendor registered at UNGM- number 402174.

We owe our success to the creativity, hard work and dedication of our employees. The company executes its work placing more emphasis on quality, innovation, timeliness and a range of construction solutions tailored to meet client needs. Working seamlessly as a perfectly coordinated team, we provide solutions to complex construction projects on schedule delivering a professional, reliable and efficient service.

We place more emphasis on quality and delivery time to meet expected satisfaction which is how we have managed to successfully accomplish large scale projects.

CANAAN CONSTRUCTION COMPANY is a General Contractor utilizing high quality materials, engineering equipment & technical expertise to meet the most stringent international standards required to execute construction projects.

Our range of services include all construction related tasks – from complex turnkey construction to civil engineering, roads and bridges, water and power plants, mechanical, electrical engineering and plumbing, renovation, operational and maintenance work. We place great importance on the digitalization of construction processes and guarantee high standards of quality from the onset, we deliver on time and within allocated budget. We believe in the strength of the team that makes the difference when it comes to making impossible, possible.

We have successfully accomplished large scale projects with numerous bridge construction and industrial projects, gradually changing the development status of South Sudan. We are continuously expanding our business in a solution-oriented manner by adding special divisions such as environmental engineering or tunnelling.

Many of our spectacular projects have set new standards beyond the limit of technical feasibility.

We have a team that supports our operating units throughout the entire construction process, starting with the early acquisition stage and going through tendering and construction design up to site management. Modern construction projects can be designed, built and operated more efficiently with higher quality output when knowledge is shared swiftly and transparently.

We have developed a new digital planning method for the construction sector that involves all project participants from the start, thus facilitating the interdisciplinary analysis of data and correlations increasing the possibility for early error detection and alleviation.

CCC is led by an experienced management team, with members and departments working collaboratively to leverage on their strengths & experience to deliver the best in technical service & project management. For each project, a team of highly skilled & experienced professionals are assigned & equipped to meet specific challenges encountered at each project site. A dedicated project manager is designated to supervise the team's work on a day-to-day basis as well as to act as the direct point of contact to the client.

Our long term delivery strategy is to continuously maintain excellent client relationships through mutual trust and unrivalled efficient service.

Our senior management is fully committed and personally involved in all major projects alongside the project managers. Through experience on-site, the project team's expert management, coordination, planning, purchasing & quality control, this synergy ensures a transparent, accountable project process. The long term accomplishment is to continuously maintain excellent client relationships through mutual trust and unrivalled efficient service.

Our renowned establishment, vast experience, distinction in project management and excellent client relationship uniquely place us to meet and execute the most challenging projects in this rapid pace of scaling the infrastructure & development need in South Sudan and beyond.



FROM FOUNDATION TO PRESENT DAY

COMPANY HISTORY

Canaan Construction Company is a construction company founded in Eritrea in 1991. It has been engaged in various construction work which include; provision of a full range of construction and trading services- general contracting, design-build, construction management, program management and construction materials trading.

CCC also offers specialized services which include prefab houses (wooden, steel and aluminium) supply and erection, multi storey building and road project construction. In 2000, the company shifted to UAE, Dubai and continued its engineering and trading works with maximum capacity.

In 2006 Canaan Construction Company opened an office in Juba, Southern Sudan and continues to be involved in the Construction and supply of construction materials.

In 2006 the company opened an office in Juba, Southern Sudan and is involved in the Construction and supply of construction materials. Since 2006, we have been building relentlessly to be the pioneering pivot in construction. Having successfully handled a solid number of contracts with numerous roads, buildings and bridges on a large-scale basis, we are continuously expanding our business in a solution-oriented manner by adding specialized divisions. Many of our spectacular projects have set new standards across the industry.

- 1991** CCC was founded in Eritrea
- 2000** The company shifted to Dubai,UAE continued its engineering and trading works
- 2006** To diversify and change the South Sudan economic and infrastructure status , the company opened an office in Juba South Sudan
- 2007** Got our first clients in Juba, in the hospitality sector i.e Juba Grande Hotel, Asmara Hotel, Shalom Hotel
- 2008** Contracted by the Government of South Sudan for the construction of Rub halls for SPLA South Sudan.
- 2009** Contracted by Canaan Group of Companies Limited for the construction of CANAAN WATER Factory and LEHEM JUICE Factory
- 2013** Contracted by one of our current biggest client- UNOPS (United Nations Office for Progress & Services) for a bridge construction project in Akobo, YIDA Ajjong, YEI morobo truck road projects, Haffirs in AYOD and Akobo and many more projects we currently have ongoing with them.
- 2019** UNMISS (United Nations Mission in South Sudan) contracted us to supply & deliver 10.000m3 Murrum to BENTIU- RUBKANA Airstrip.
- 2022** We have been involved in the construction of over 100 projects. We are continuously looking forward to impacting change to the development of South Sudan and in the world.



COMPANY PROFILE

COMPANY OVERVIEW

GUIDING PRINCIPLES

Our Vision

To be the primary builder of choice at all times both nationally and globally, for our renowned *excellence, quality, performance,* and *reliability* in all types of construction.

“A good name is more to be desired than great riches. Favors are better than silver and gold.”

Our Mission

- To provide our customers with high quality construction services at a fair and market competitive price.
- To ensure the longevity of our company through repeat and referral business.
- To maintain the highest level of professionalism, integrity, honesty and fairness in our relationship with our suppliers, subcontractors, professional associates and customers.

Our Values

Integrity- Our Company was founded on proverbs 22:1 “a good name is more to be desired than great riches. Favors are better than silver and gold.” We believe integrity is the foundation of a good name and an essential ingredient for true success in life and in business. We seek to operate according to the highest standard of integrity and in a manner consistent with biblical principles.

Excellence- We provide quality work at an exceptional value and complete our projects in a timely, efficient, and organized manner. We continue to learn and improve as we strive for excellence in every area.

Service- We commit to serving our clients as a unified team in order to ensure the success of each project. We take ownership of each job and are willing to go the extra mile to exceed expectations. We look at each job as an opportunity to proactively find creative solutions for our client’s needs.

Relationships- We value our client’s employees’ subcontractors and vendors. We relate to our co-workers and clients in an honest, trustworthy, and timely manner. We respect each person as an individual and we treat others as we would want to be treated, exhibiting Christian love.

Growth- We create an atmosphere where employees grow spiritually, personally, professionally and families take priority over business. We value integrity, commitment, servant-hood and teamwork from our employees.





BUSINESS OBJECTIVES

- To provide quality, efficient and modernized construction works in a clear and transparent system.
- To play our role in the development of South Sudan.
- To create job opportunities.

We continue to closely monitor and improve the metrics that define our key success factors while at the same time keeping ourselves updated on the ever changing trends in the industry.

- We continue to closely monitor and improve the metrics that define our key success factors while at the same time we keep ourselves aware of the changes in the industry that could affect our future top and bottom-line figure. Some of the Key Success factors in the next 5 years for the company will be:
 1. To generate adequate funds to finance growth;
 2. Strategically Position ourselves in the market
 3. Ensure a steady flow of business;
 4. Bring on board more highly Skilled staff;
 5. Ensure consistent flow of quality standard raw materials.
 6. Renewal of our operating licenses

OUR SERVICES

Our range of services includes all construction-related tasks – from complex turnkey construction to civil engineering, bridge building, tunnelling and ground engineering to public/private partnerships. In the realization of its construction projects, **Canaan Construction Company** places great importance on the digitalization of construction processes and on partnership-based working relationships. **CCC** guarantees high standards of quality at an early stage, on time and within budget constraints.

Canaan Construction Company guarantees high standards of quality at an early stage, on time and within budget constraints.

Civil construction.

Over the years we have been involved in a wide range of civil and structural engineering construction. This ranges from steel structures, erections, reinforced concrete structures, road construction in gravel, Paving blocks, concrete, Bitumen roads and associated drainage structures. We have had vast experience in the building industry, having constructed high rise and low-rise residential buildings, commercial and institutional.

Infrastructure

From paths to highways, footbridges to flyovers, we continue to work with various public sector clients across East Africa, to improve on the existing roads and bridges network. Our infrastructure experience covers asphalt roads, bridges (steel or concrete), airport runways, marine and port facilities.

Mechanical and Electronic services

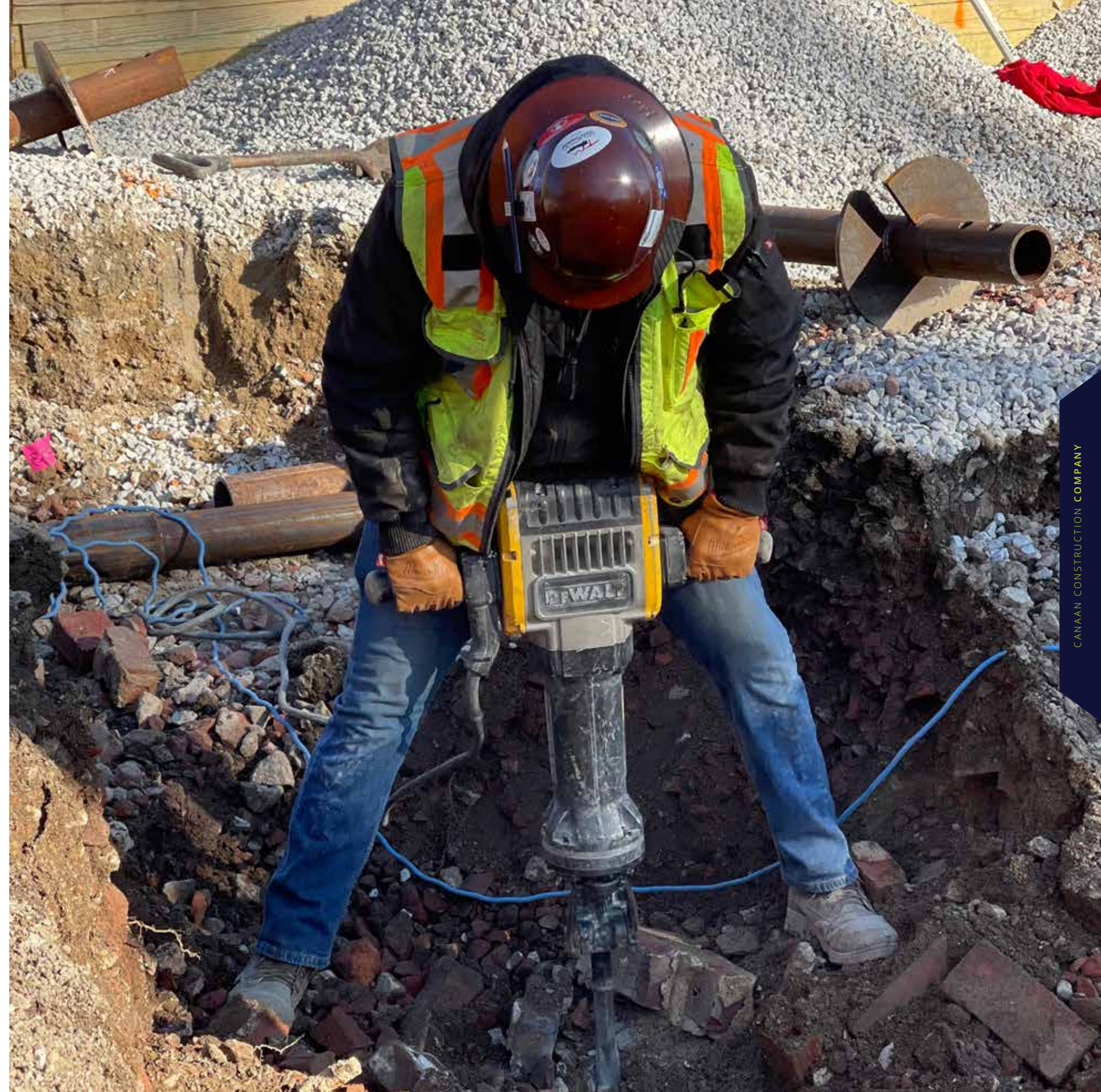
We are involved in the installation and maintenance of mechanical and electrical equipment. Using the latest technology in AUTOCAD projects range from the installation of secure high voltage networks to structured cabling and data networks.

Renovation

We are experts in the renovations, remodeling and restoration of buildings, roads, homes and even residential amenities.

Operation and Manufacturing

We deal with various supply chain activities such as gathering requirements from customers, procuring raw materials, allocating resources, scheduling the production and maintaining the inventory.





OUR MARKET

Over time we have ventured into a diverse range of markets:

- **Healthcare**- Since 2009, we have come to understand the complexity that comes with the planning and execution of a health care construction. The building system as well needs to consider the cost-effectiveness while ensuring that the relevant safety measures are well taken care of.
- **Commercial**- With the various expertise we have, we syndicate our comprehensive knowledge with all the characteristics that come with achieving the sophistication of the particular facility. We ensure that the kind of facility we build reflects the maximum operation of the structure, and is well finished with first-class techniques.

This being a constantly diversifying industry, we ensure that we always professionally handle all the aspects of your construction needs.

- **Hospitality**- This is one of the most complex industries that consider the safety of most people. This being a constantly diversifying industry, we ensure that we professionally handle all the aspects of your construction while maintaining the relevant procedures that ensure that your clients experience the comfort that they deserve.

- **Manufacturing & Industry**- With the kind of experience we have in the industry, we understand that project delays can result in loss of revenue and we don't want that for you. The manufacturing industry requires specific machinery that is exclusive to various industries.
- **Government**- The vast construction developments are those spearheaded by the government. Mostly, these projects require tight deadlines and are usually multi-billion projects. We have laid structures and processes that ensure that we deliver the desired project on time and up to standard.
- **Education Sector**- Evolution in the education industry has grown. We can deliver normal classrooms as well as complex buildings that host thousands of learning facilities.
- **Infrastructure Roads & Bridges**- It is anticipated that in the next decade, Southern Sudan will be connected with a good road network that will serve the community all around. We are part of this revolution. Our upgraded technology allows us to construct high-quality roads with minimal or no inconvenience to the users and neighboring communities.

SERVICE PLEDGE

We commit to serving our clients as a unified team to ensure the success of each project. We take ownership of each job and are willing to go the extra mile to exceed expectations. We look at each job as an opportunity to proactively find creative solutions for our client's needs.

DAY TO DAY OPERATIONS

OUR FACILITIES

As a construction firm that handles multi-million projects of building roads and construction, Canaan Construction Company owns different sized modern roads and heavy machines like Grader, wheel loader, excavator roller dump trucks.

Day by day growing demand for fast work and construction of high rise buildings calls for efficient machinery and at **CCC** we have nothing short of that. We work with the truck mounted concrete pumps, several trucks, water pumps and tankers to make work much faster and easier with less manpower.

We have heavy duty machines that undertake earthworks and other massive operations at the site. These include:

Powerful **bulldozers** for pushing large piles of rocks, debris and heavy materials. They have wide tracks able to maneuver through difficult terrain, this track helps to disperse the bulldozer's weight across a wide footprint, allowing it to work on different types of sites that may be muddy or sandy. We use top class **Motorgraders** for road works to create flat surfaces for asphalt to be spread on our Wheel Loaders.

Just like any other construction, our **excavators** are a popular type of heavy equipment for construction that we use for excavating earth and rocks and loading them onto dump trucks. CCC handles a wide range of work by changing the front attachment. Our **Backhoe loaders** are our most versatile machines. We use them as earth moving equipment, small demolitions at the construction site, digging holes, excavation, landscaping, breaking up of concrete or asphalt, digging trenches as well as loading and unloading materials trucks.

These are just a few pieces of equipment, since we are involved in almost all areas of construction, we have over 100 efficient equipment each for its own use.



ORGANIZATIONAL STRUCTURE

SKILLED MANPOWER

Canaan Construction is led by an experienced management team, with members and departments working together in sync linking their strengths and leveraging their experience to bring every client the best in technical service & project management. For each project, a team of highly skilled & experienced professionals are assigned & equipped to meet specific challenges encountered in each project site.

A dedicated project manager is designated to supervise the teams work on a day-to-day basis as well as to act as the direct point of contact to the client. At present we have 20 experienced engineers, 16 technicians & 40 skilled administrative staffs.

Our Expertise:

Canaan Construction Company At present has the following skilled manpower.

The Directors

1. **Biemnet Leake**
Managing Director
2. **Bereket Goitom**
Managing Director
3. **Eng. Teame G. Gergish**
Executive Director

Description	No.	Additional Remarks
Engineers 12		
Directors	3	2 Civil Engineers & 1 Structural Engineer
Project Managers	3	3 Civil Engineers
Site Engineers	2	1 Civil Engineer & 1 Quantity Engineer
Quality Control	2	1 Civil Engineers & 1 Mechanical Engineer
Surveyors	3	
Draftsman	2	
Foremen	6	
Quantity Engineers	2	
Technicians 23		
Electricians	3	2 Electrical Engineer & 1 Electrical & Electronical Engineer
Plumbers	2	
General Mechanic	3	2 Plant Mechanics
Auto-Electricians	2	
Welder		

Administration staff 51

Operations Manager	1	
Operations Officer	1	
Coordinators	2	
Head of Administration	1	
Secretary	1	
Assistant Administrator	1	
Personnel Head	1	
HSE Manager	2	
Project Administrators	2	
Finance Manager	1	
Project finance	2	
Accountants	3	
Cashers	3	
Procurement Section	1	
Store keepers	3	
Purchasers	3	
Non-Skilled Workers	23	Common labor, Guards, Cleaners, Postmen



WHY CHOOSE US

Our Unique Selling Propositions (USPs)

Quality Management Plan- The company is led by an experienced management team, with members and departments working together in sync to link their strengths to leverage their experience. This brings every client the best technical service and project management.

We take ownership of each project and go the extra mile to exceed expectations while taking each one as an opportunity to proactively find creative and effective solutions for our client's needs.

Quality Service- We commit to serving our clients as a unified team in order to ensure the success of each project. We take ownership of each job and go the extra mile to exceed expectations.

We look at each job as an opportunity to proactively find creative solutions for our client's needs.

Relationships- We value our partners and relate to them in an honest, trustworthy and timely manner. We respect each person as an individual and we treat others as we would want to be treated.

Growth Oriented- We aim to create an atmosphere where employees grow whilst ensuring that our partners enjoy first-class infrastructure. We value integrity, commitment, servanthood and teamwork between our clients and employees.



GRAND HOTEL JUBA



CANAAN
CONSTRUCTION

COMPANY PROFILE

OUR **PORTFOLIO**

OUR CLIENTS

Canaan Construction Company has been playing its role in executing several projects in the whole country. Since its establishment in South Sudan, the company has managed to construct and deliver a vast number of multi-million projects successfully.

Done for INGOs, Government & Other Organizations

No	Project	Nature of Work	Cost in USD	Year
1.	Juba Grande Hotel	<ul style="list-style-type: none"> 80 self-contained rooms of high quality timber & gypsum prefab. A restaurant, bar & reception hall of very good quality timber & gypsum prefab which covers an area of 700m². A permanent concrete block conference hall, which covers an area of 400m² Swimming pool, gymnasium hall, big laundry and offices. A permanent concrete block workers accommodation rooms, which covered an area of 500m² All the necessary site works which include the walkways, electrical, sanitary and water supply system. 	\$5,000,000.00	Sept. 2007
2.	Asmara Hotel	<ul style="list-style-type: none"> 20 self-contained rooms of very good quality timber prefab A bar and restaurant hall of very good quality timber prefab, which covers an area of 250m². 	\$350,000.00	Nov. 2007
3.	Shalom Hotel	<ul style="list-style-type: none"> 30 self-contained rooms of very good quality timber prefab A permanent concrete block bar and restaurant hall, which covers an area of 200m² 	\$900,000.00	Dec. 2007
4.	Rub halls For SPLA South Sudan	<ul style="list-style-type: none"> To prepare the foundation and slab for the rub hall and erect the rub hall. All the materials were supplied by Canaan Construction Company except the rub halls. 	\$500,000.00	May. 2008

No	Project	Nature of Work	Cost in USD	Year
5.	FENCE WORK IN JUBA	<ul style="list-style-type: none"> To fence the compound of the company with wire mesh and RHS posts at 2m interval All the material and labour was supplied by Canaan Construction Company and managed and supervised the project technically. 	\$225,000.00	Sep 2009
6.	CANAAN WATER Factory	<ul style="list-style-type: none"> A self-owned water factory in Juba, South Sudan. This project has a complete bottled drinking water production line and is known in Juba with a brand name CANAAN. 	\$2,000,000.00	Jan. 2010
7.	LEHEM Juice Factory	<ul style="list-style-type: none"> This is a self-owned juice factory in Juba, South Sudan. This project includes Construction of factory Accommodation for workers. 	\$1,500,000.00	Aug. 2014
8.	Canaan Bakery	<ul style="list-style-type: none"> This project includes a complete bakery with an accommodation for staff & the total built-up area was 300sq.m with proper fencing. 	\$400,000.00	May 2009
9.	YAMBIO STADIUM	<ul style="list-style-type: none"> This project was a governmental project for Construction of stadium in Yambio, Western Equatoria State The CPA celebration of 2010 was done in this stadium. 	\$4,000,000.00	Jan. 2010
10.	NIMULE RESORT	<ul style="list-style-type: none"> This was a construction project we did for Nimule Logistics and Co. in Tong Ping, Juba, South Sudan. The project cost was double story's hotel rooms with a big swimming pool. 	\$1,350,000.00	May 2011
11.	Supply and Erection of Prefab Offices For SSAC	<ul style="list-style-type: none"> Supply and erection of 40 units of prefabricated 20 feet container type offices for 10 states in South Sudan; C/ Equatoria – Juba, 6. Unity State – Bentiu W/Equatoria – Yambio, 7. N/B/Ghazal – Awil E/Equatoria – Torit, 8. W/B/Al-Ghazal – Wau Jonglei State – Bor, 9. Warrap State – Kwajok U/Nile State – Malakal, 10. Lakes State – Lake 	\$638,400.00	Aug. 2011
12.	Supply and Install Generators	<ul style="list-style-type: none"> Supply and install and commission generators. Six 25KVA generators Two 250KVA generators 	\$398,000.00	Sep 2012
13.	Upgrade of Warehouse	<ul style="list-style-type: none"> Upgrade of the warehouse in Wunrok project, Including earthwork, fencing and offices of the warehouse. 	\$300,000.00	May 2011

No	Project	Nature of Work	Cost in USD	Year
14.	Upgrade of Warehouse	<ul style="list-style-type: none"> Upgrade of the warehouse in Unity state. Including earthwork, fencing and offices of the warehouse 	\$250,000.00	May 2011
15.	Water Supply and Sewerage System	<ul style="list-style-type: none"> This is a water supply and sewerage system project, for 30 villas in the SPLA barracks in the new site. Water distributing layout and HDPE piping, Erecting of 30 water tanks at head of 6 meters Supplying PVC tanks, Sewerage layout and septic tank construction Selection of good underground water source Constructing of three boreholes, Supplying and installing submersible pumps that can discharge from the boreholes to the elevated water tank of 30,000 litres capacity which has ahead of 15m. 	\$550,000.00	June 2011
16.	Warehouse	<ul style="list-style-type: none"> This is a self-owned warehouse in Juba, South Sudan. In this project erecting of steel columns and construction of block wall was the main activity done. 	\$400,000.00	July 2011
17.	Office Block In NIMRATALATA	<ul style="list-style-type: none"> This is a three-story office block project. The project includes 20 offices and conference halls and is owned by Canaan Construction Company. 	\$500,000.00	Sep 2012
18.	STATE HOUSE SWIMMING POOL (Presidents Office)	<ul style="list-style-type: none"> This is a swimming pool with all accessories project for the state house of the Government of South Sudan. Repairing and modification of swimming pool. Construction of new balancing tank. Walkway tiles with the storm drainage system. Fence work with fence lighting. Four toilet rooms with urinal bowl and hand washbasin. Jacuzzi with pump house. – A Pool bar. Providing gutters and downpipes for existing building 	\$350,000.00	Nov 2012
19.	WIND-SOR TORIT Hotel	<ul style="list-style-type: none"> This is a double-storey hotel project. The project includes 50 luxurious self-contain rooms, bar, restaurant, gym, sauna and swimming pool. This project is in Torit and is estimated at 1.5million USD 	\$1,500,000.00	Jan 2013
20.	AKOBO Bridge Retaining Wall	<ul style="list-style-type: none"> This is a bridge constructed in Akobo County in Jonglei state. It connects Akobo with the other part of South Sudan. 	\$750,000.00	March 2013

No	Project	Nature of Work	Cost in USD	Year
21.	YIDA AJJONG Road	<ul style="list-style-type: none"> Improving road and side drainage channels. Machinery used: Grader Cat 140K, Water truck, Roller compactor, and Bulldozer D6R. Clearing and grubbing, grading, compacting, collecting and damping sub-base course. 	\$600,000.00	Sep 2013
22.	Royal Paris Hotel	<ul style="list-style-type: none"> This is one of the multi-storey projects. The project is estimated to be about 5 million dollars. The company is managing to fully construct the hotel by taking full contract of the workmanship and material required until foundation only. The hotel will have 92 self-contained rooms, a restaurant, bar, reception hall, conference hall, swimming pool, gymnasium hall, big laundry and offices 	\$5,000,000.00	July 2013
23.	Construction of Internal Hydraulic Structure in POC Camp	<ul style="list-style-type: none"> Excavation along the sides of the main road and internal road Concrete pipe culverts of 450mm, 600mm, 900mm, 1200mm diameter size. Concrete pipe has been put where vehicles and pedestrians cross. 	\$800,000.00	June 2014
24.	YEI MOROBO Trunk Road Maintenance	<ul style="list-style-type: none"> Clearing and grubbing with dozer Grading with grader Compacting with roller compactor Collecting and damping (laying) sub-base the second is the maintenance of a 28 km feeder road stretching from Ombateli to Kargulu. In this portion, the following activities have been accomplished. Opening of roadside channel drainage. 	\$138,000.00	July 2014
25.	Construction of Haffirs in AYOD & AKOBO	<ul style="list-style-type: none"> Construction of two Haffirs at Maruo and Murech each 40,000m³ capacity. 	\$1,496,268.00	July 2014
26.	Construction of Prefab Offices for ICRC	<ul style="list-style-type: none"> Supply of Construction Materials (45 prefabs of 20 Feet). Constructing 45, G⁺ office using those Prefabs. Constructing Steel Structure Staircase Steel Truss Work. 	\$720,000.00	May 2015
27.	Expansion and Maintenance of RUBKONA Airstrip.	<ul style="list-style-type: none"> Expansion and maintenance of RUBKONA AIRSTRIP Rehabilitation of the existing 1200m by 20m Widening the existing Airstrip by 10m Extending the runway to make it 1500m Excavate drain channels alongside the Airstrip. 	\$1,127,610.00	June 2015

No	Project	Nature of Work	Cost in USD	Year
28.	Construction of Warehouses	<ul style="list-style-type: none"> Construction of Pre-engineered Steel Structure warehouses for Helicopters & Tanks 	\$6,480,000.00	October r 2015
29.	Mingkman River Port & Ancillary Works	<ul style="list-style-type: none"> Construction of River Port & Ancillary works. Construction of Offices, Warehouse & Toilets. 	\$1,930,000.00	March 2016
30.	Rehabilitation & Expansion of Ajuong-thok Air Strip	<ul style="list-style-type: none"> Rehabilitation of the existing 1000m by 20m runway. Increasing width & Length W= 40m L= 1500m respectively. Expansion width & Length of Embankment to 72m & 2000m respectively. Construction of 4300m Drainage & Placing culverts at required sections. Construction of waiting room. 	\$1,050,000.00	15 August 2017
31.	Lease of Heavy Duty Equipments	<ul style="list-style-type: none"> Providing about 21 Earth Moving Machines to the UN in Bentiu, For 2 Years. 	\$2,395,425.00	July 2017 – March 2020
32.	Supply & Delivery of Murram	<ul style="list-style-type: none"> Supply & Delivery of 10.000m³ Murram to BENTIU- RUBKANA Airstrip. Supply & Delivery of 22,300m³ Murram to BENTIU- UNMISS Camp. 	\$3,314,100.00	May 2018 – March 2019
33.	Rehabilitation of Community Access Feeder Roads Lot – 5 Gangura – James Diko - Raminze	<ul style="list-style-type: none"> Site clearance & topsoil stripping Earthworks Excavation & filling of structure Culverts & drainage works Passage of traffic Gravel wearing course Natural materials for sub-base Road furniture Ancillary works 	\$1,494,855.07	March 2019 – March 2020
34.	Rehabilitation of Community Access Feeder Roads Lot – 4 James Dick – Gangura	<ul style="list-style-type: none"> Site clearance & topsoil stripping Earthworks Excavation & filling of structure Culverts & drainage works Passage of traffic Gravel wearing course Natural materials for sub-base Concrete works Road furniture Ancillary works 	\$2,531,008.91	March 2019 – March 2020

Earth Moving Projects Done For DPOC

No	Project Name	Nature of Work	Year	Contract Some in USD
1.	Construction of Dykes	<ul style="list-style-type: none"> Construction of Dyke for Evaporation in Zone B & C 	2014	\$184,451.40
2.	Construction of Dykes	<ul style="list-style-type: none"> Construction of Dyke for Evaporation in Zone B & C 	2014	\$38,256.30
3.	Construction of new Evaporation Pond in Gumry	<ul style="list-style-type: none"> Excavating a pond 100m X 100m X 2m Constructing a Dyke 2m height, slope 2:1 	2015	\$391,412.70
4.	Clearance of new Hazard Yard in Gumry	<ul style="list-style-type: none"> Clearance of new hazard yard by 1000m X 800m 	2015	\$105,120.00
5.	Rig Service	<ul style="list-style-type: none"> Rig Service 	2016	\$6,735.60
6.	Pad for Gumry Chemical Yard	<ul style="list-style-type: none"> Constructing a Pad Dimension 200m X 100m Embankment with a thickness of 0.50m Intermediate with the thickness of 0.20m gravel layer for the thickness of 0.15 the ratio is 3:1 	2015	\$678,107.98
7.	Reconstruction of Hamal 24. Clearing of MOL15, Amal 11, HML-NW4	<ul style="list-style-type: none"> Extension of Well Pad 5 X 110meter Extension of gravel layer for 45 X 15m Excavating Water pit with the dimension 15 X12X 13m Excavating of the pit with the dimension 5X3X3m Excavating of two west pits with the dimension 3X3X3M 	2015	\$10,149.30
8.	Additional works for Moleeta - 22	<ul style="list-style-type: none"> Extension of Well Pad 5 X 110m, with the clay of the thick =1m Extension of Gravel level for 30 X 2m Cleaning the area of 50 X 80m for Rig Camp Excavating of Water Pit with dimension 15 X 12 	2015	\$15,606.00
		<ul style="list-style-type: none"> X3m Excavating of Pit with the dimension 5X3X3m Excavating of West Pit with the 50X1X1m dimension 		

No	Project Name	Nature of Work	Year	Contract Some in USD
9.	Well Pad Hamal 27& its Access Road	<ul style="list-style-type: none"> Well Pad type D.3 Mud Pit with dimension of (30mX15m) & Water Pit (15mX15m) Sub Structure (30m X 30m) & depth 0.45m Embankment (140m X 110m) & thickness 0.65m 3layers Gravel area (60m X 60m) & thickness of 0.15m 	2015	\$265,103.00
10.	Slope – Finishing in Gumry	<ul style="list-style-type: none"> - Finishing of Gumry Evaporation Pond 	2015	\$20,086.20
11.	Transmission Line Fire Line	<ul style="list-style-type: none"> Transmission Line Fire Line in ADAR & GASSAB Area with total length 20X100X1137/10,000 = 227.40 	2015	\$298,803.60
12.	Excavation in Palouch FPF	<ul style="list-style-type: none"> Excavation in Zone B in Palouch Excavation Pond 	2015	\$32,211.64
13.	Well Pad Hamal 29 & its Access Road	<ul style="list-style-type: none"> -Excavating the Mad Pit with dimension (35m X 15m X 4m) Water Pit (15mX15mX3m Two areas of Embankment (140mX110m) with an overall thickness of 0.65m are to be put in three Layers. Intermediate layer with an area of (140mX110m) & 0.2m thickness Construction of Access Road: 6m top width, 330m Land 1:2 slop. Embankment with an overall thickness of 065m to be put in 3 layers. 	2015	\$224,615.05
14.	Extension of Access Road LUIL N1 (JUMMEIZA) to LUIL N2 (GESSEB)	<ul style="list-style-type: none"> - Construction of Access Road with 6m top width -Embankment with an overall thickness of 0.65m to be put in 3layers. An intermediate layer of 0.2m thickness Gravel wearing course of 0.15m thickness with gravel to sand mixture of 3:1 ratio. 	2015	\$493,196.94

No	Project Name	Nature of Work	Year	Contract Some in USD
15.	Excavation in Palouch FPF	<ul style="list-style-type: none"> - Excavating 24,200m3 unsuitable materials 	2015	\$84,700.00
16.	Well Pad PS 65 & its Access Road	<ul style="list-style-type: none"> -Excavating the Mad Pit with dimension (35m 15mX 4m) & Water Pit (15mX15mX3m) Excavation of the structure (30mX30m) Embankment (140mX110m) except the substructure, The thickness of 0.65m to be put in three layers. -Intermediate layer with an area of (140mX110m) & 0.2m thick Gravel area (60mX60m), the thickness is 0.15m Construction of Access Road with 6m top width, 330m length and 1:2 side slop. Embankment with an overall thickness of 0.65m with 3 layers. An intermediate layer of 0.2m thickness Gravel wearing course of 0.15m thickness with gravel to a sand mixture of 3:1 ratio. 	2015	\$215,087.68
17.	Road to MISHMSH SW-1	<ul style="list-style-type: none"> -Introducing an Intermediate layer with the thickness of 0.2m & width of 8m Wearing Course Length = 1.5m to width 7m, thickness = 0.15cm (from 2+00KM to 3.5KM) Haulage Gravel from DPOC stock Gumry 	2015	\$120,614.53
18.	SITAIPE Branch Road Upgrading	<ul style="list-style-type: none"> Wearing Course Length 3.4KM, to width 7m Thickness = 0.15cm (from 3+00KM to 7KM) Blending (Sand = 1, Gravel = 3) 	2015	\$236,201.55
19.	Excavation of Water Pipe in MOLEETA	<ul style="list-style-type: none"> Excavating the pit & backfill Covered Pit area = Length 30m X width 3m = 360m3 Haulage Sand Distance 18KM 	2015	\$10,533.60
20.	Maintaining the Well Pad in Hammal - 29	<ul style="list-style-type: none"> Levelling & Compacting the Well Pad Moving the well-centre & backfilling the previous one 	2015	\$6,547.57

No	Project Name	Nature of Work	Year	Contract Some in USD
21.	LUIL N1 Access Road	<ul style="list-style-type: none"> Scarification & re-compaction of the existing road surface of 1900m Adding & compacting intermediate material in the posts a Construction of Gravel wearing course layer of 7m top w, 1900m length & 0.15m thickness with gravel to sand mixture 3:1 	2015	\$183,864.11
22.	Murram haulage from BONJ	<ul style="list-style-type: none"> The quantity of murram is 2000m³ -All dump trucks were 16m³ -Every dump truck were checked & inspected by the site engineer. The location of Stock Pile was assigned by the site construction engineer. 	2015	\$176,400.00
23.	FAL – 4 OGM – 22 & FENTI – 2 Road Upgrading	<ul style="list-style-type: none"> Intermediate layer length 3400m width 8m (average thickness 0.20cm) Wearing course length 3400m, to width 7m (Av thick 0.15cm) Haulage Gravel distance from BONJ (Maban) Blending (sand = 1, Gravel = 3) 	2015	\$658,392.23
24.	Rig Service for Well Pad GASSAB – 28	<ul style="list-style-type: none"> -Clearing the Well Pad from grass & level it Excavating the Anchors & pits Backfilling of the Pit after the work was done Reshaping of the Access road & Backfill the area along the road. Adding new materials (Sand/Clay/Gravel) 	2015	\$1,040.00
25.	Rig Service for Well Pad GASSAB – 38	<ul style="list-style-type: none"> -Clearing the Well Pad from grass & level it Excavating the Anchors & pits Backfilling of the Pit after the work was done Reshaping of the Access road & Backfill the spots along the road. Adding new materials (Sand/Clay/Gravel) 	2015	\$1,280.00
26.	Rig Service for Well Pad GASSAB – 30	<ul style="list-style-type: none"> -Clearing the Well Pad from grass & level it Excavating the Anchors & pits Backfilling of the Pit after the work was done Reshaping of the Access road & Backfill the area along the road. Adding new materials (Sand/Clay/Gravel) 	2015	\$1,040.00
27.	FAL – 9 Access Road Upgrading	<ul style="list-style-type: none"> Intermediate layer length 610m width 8m (average thickness = 0.20cm) Wearing course length 610m, to width 7m (Av 	2015	\$120,589.80

No	Project Name	Nature of Work	Year	Contract Some in USD
		<ul style="list-style-type: none"> thickness = 0.15cm) Haulage Gravel distance from Stock Pile Blending (sand = 1, Gravel = 3) 		
28.	GERADON Access Road Upgrading	<ul style="list-style-type: none"> Scarification & Re-compaction (Length = 6200m) -Intermediate layer length 3800m, width 8m & average thickness =0.20cm) Wearing course length 3800m, to width 7m & (Av thickness =0.15cm Haulage Gravel distance from BONJ (Maban) Blending (sand = 1, Gravel = 3) 	2016	\$689,291.62
29.	Maintenance of PALOUCH – RENK Road	<ul style="list-style-type: none"> Scarification & Proper compaction of 3km length & 10.4m width. Construction of a clay soil embankment layer of 3km length 8.4m top width & 05m thickness. Construction of Intermediate (sub grade) layer of 3km length, 7.6m top width & 0.2m thickness. Construction of 3km length, 7m top width & 0.15m Gravel-Sand Wearing Course (3:1) Mix Ratio. 	2016	\$265,558.89
30.	Maintenance of PALOUCH – RENK Road	<ul style="list-style-type: none"> Haulage of 7,450m³ Murram Dumped in two stocks Near Station 73km ... 6000m³ - Near 85km 1450m³ 	2016	\$774,800.00
31.	Maintenance of Palouch Renk Road	<ul style="list-style-type: none"> Scarification & Proper compaction of 2.4km length & 10.4m width. Construction of a clay soil embankment layer of 2.4km length, 8.4m top width & 05m thickness. Construction of Intermediate (sub grade) layer of 2.4km length 7.6m top width & 0.2m thickness. Construction of 2.4km length, 7m top width & 0.15m Gravel-Sand Wearing Course (3:1) Mix Ratio. 	2016	\$350,048.20
32.	Rig Service for Well Pad Moleta 19	<ul style="list-style-type: none"> -Clearing and Grubbing, reshaping & maintaining the Well Pad area & levelling it with good compaction Excavation of the waste pit (45m*1m*0.5m). Excavating the Anchors & pits Backfilling of the waste Pit after the work was done Reshaping of the Access road & Backfill the area along the road. Adding new materials (Sand/Clay/Gravel) 	2017	\$2,233.00

No	Project Name	Nature of Work	Year	Contract Some in USD
33.	Maintenance of Palouch -Friendship Hospital Road	<ul style="list-style-type: none"> -Applying the GWC layer of 0.10m thickness length 1.5km, the gravel-sand mixture ratio is 3:1 respectively, slopes 1:1.5 -Processing of the layers will be hourly basis -QC/Quality Assurance should be done accordingly 	2017	\$78,822.41
34.	Maintenance of Well Pad – FE-27 H & access road (Rig Service)	<ul style="list-style-type: none"> -Clearing and Grubbing, reshaping & maintaining the Well Pad area & level it with good compaction Excavation of the waste pit (45m*1m*0.5m). Excavating the Anchors & pits 	2017	\$2,309.50
		<ul style="list-style-type: none"> done Reshaping of the Access road & Backfill the area along the road. Adding new materials (Sand/Clay/Gravel) 		
35.	Upgrading Of the Well Pad – FC-29H & Its Access Road	<ul style="list-style-type: none"> -Clearing and Grubbing, reshaping & maintaining the Well Pad area & levelling it with good compaction Excavation of the waste pit (45m*1m*0.5m). Excavating the Anchors & pits Backfilling of the waste Pit after the work was done Cut & fill and compact an area of (15m*10m*0.2m) with intermediate material Adding new materials (Sand/Clay/Gravel) 	2017	\$2,451.00

No	Project Name	Nature of Work	Year	Contract Some in USD
36.	Construction of Well Pad –FS-26 H & access road	<ul style="list-style-type: none"> Construction of development well pad type D3. -Excavating the Mud Pit with dimension (35m X 15m X 4m) & Water Pit (15mX15mX3m Construction of Embankment (140mX110m) with an overall thickness of 0.65m to be put In three Layers Excavation of substructure (30m*30m*0.45m) Intermediate layer with an area of (140mX110m) & 0.2m thick Construction of substructure layer (30m*30m*0.65) Construction of gravel an area layer (70m*52*0.15) m Embankment with an overall thickness of 065m to be put in 3 layers An intermediate layer of 0.2m thickness Gravel wearing course of 0.15m thickness with a mixture of 3:1 - Excavation of 2 sewage pits (5m*5m*4m).- Excavation of flare pit(4m*4m*2m). – Construction of access road with top width 5m and side slop 1:2 with embankment layer 0.65 average widths 7.25m, intermediate layer 0.20m average width 6.1 GWC top width 5m. 	2017	\$234,224.3
37.	Maintenance of Well Pad – FG-27 H & access road (Rig Service)	<ul style="list-style-type: none"> -Clearing and Grubbing, reshaping & maintaining the Well Pad area & levelling it with good compaction Excavation of the waste pit (45m*1m*0.5m). Excavating the Anchors & sewage pits Backfilling of the waste Pit after the work was done Reshaping of the Access road & Backfilling the spots along the road. Adding new materials (Sand/Clay/Gravel) 	2017	\$1,331.50
38.	Maintenance of OGM-9 Access Road	<ul style="list-style-type: none"> -Clearing and Grubbing both sides of the road with a total area of 90 length and 5m width – Scarification and re-compaction of 950m length and 5m width. 	2017	\$5,734.31
39.	Modification of –FS-26H New Construction Well Pad	<ul style="list-style-type: none"> -Clearance of an area (70m*60m) for rig camp area. -construction of an area (70m*60m) with 	2017	\$6,078.50

No	Project Name	Nature of Work	Year	Contract Some in USD
		<ul style="list-style-type: none"> intermediate layer 0.2m Excavation of the sewage pit two (4m*4m*3m) Backfilling of existing pit Cutting of an assistance road bypass due to low T.L at five points. 		
40.	Modification of Well Pad -FK-32	<ul style="list-style-type: none"> -Clearing and grubbing two sides of good pad 15*110m -Clearance of the existent mud pit and water pit -Excavation of cutting pit - Clearance the camp area 80*60m – Excavation of two sewage 10*4*3m and 0*5*4m, 2 trips of intermediate materials 	2017	\$4,982.00
41.	Maintenance of Well Pad -FS-2 & Access Road (Rig Service)	<ul style="list-style-type: none"> -Clearing and Grubbing, reshaping & maintaining the Well Pad area & level it with good compaction Excavation of the waste pit (45m*1m*0.5m). Excavating the Anchors pits Backfilling of the waste Pit after the work was done Reshaping of the Access road & Backfilling the spots along the road. Adding new materials (Sand/Clay/Gravel) 	2017	\$360.00
42.	Maintenance of Well Pad -FO-27 & Access Road (Rig Service)	<ul style="list-style-type: none"> -Clearing and Grubbing, reshaping & maintaining the Well Pad area & levelling it with good compaction Excavation of the waste pit (45m*1m*0.5m). Excavating the Anchors pits Backfilling of the waste Pit after the work was done Reshaping of the Access road & Backfilllengths the spots. Adding new materials (Sand/Clay/Gravel) 	2017	\$1,608.00

No	Project Name	Nature of Work	Year	Contract Some in USD
43.	Construction of Well Pad -FS-30 & Access Road	<ul style="list-style-type: none"> Construction of development well pad type D3. -Excavating the Mud Pit with dimension (35m X 15m X 4m) & Water Pit (15mX15mX3m) Construction of Embankment (140mX110m) with overall thick of 0.65m to be put in three Layers Excavation of substructure (30m*30m*0.45m) Intermediate layer with an area of (140mX110m) & 0.2m thickness Construction of substructure layer (30m*30m*0.65) Construction of gravel an area layer (70m*52*0.15) Embankment with an overall thickness of 065m to be put in 3 layers An intermediate layer of 0.2m thickness Gravel wearing course of 0.15m thickness with a mixture of 3:1 ratio. Excavation of flare pit (4m*4m*2m). – Construction of access road with top width 5m and side slop 1:2 with embankment layer 0.65 average w= 7.25m, intermediate layer 0.20m average width 6.1 GWC top w=5m. 	2018	\$214,056.24
44.	Maintenance of Well Pad -PL-24 & Access	<ul style="list-style-type: none"> -Clearing and Grubbing, reshaping & maintaining the 	2018	\$880.00
	Road (Rig Service)	<ul style="list-style-type: none"> Well Pad area & level it with good compaction Excavation of the waste pit (45m*1m*0.5m). Excavating the Anchors pits Backfilling of the waste Pit after the work was done Reshaping of the Access Road & Backfill the spots along the road. Adding new materials (Sand/Clay/Gravel) 		
45.	Maintenance of Borrow PIT 1, & Skim Pond 1, 2	<ul style="list-style-type: none"> -Clearing and grubbing and reshaping the length 2,900m -Excavation of unsuitable materials and fill with black soil recompact -Construction of intermediate materials with 10m w. and 02m thick -Construction of graver wearing course 7m width and 0.1m thick 	2018	\$338,076.35

No	Project Name	Nature of Work	Year	Contract Some in USD
46.	Dyke Maintenance for Borrow Pit of PFPF (POND 2&3)	<ul style="list-style-type: none"> -Scarification, re- compaction for all section 2km length width as the existing dyke width. -Apply the intermediate layer of 0.2m thickness -GWC layer 0.15 thickness to al section 2km length. Gravel sand mix ratio 1:3 respectively, slop 1:2 -Intermediate layer &GWC processing by volume -Haulage distance of intermediate material is 15km (maximum) - Haulage distance of murrum and sand is 144 &12km 	2018	\$264,703.13
47.	Maintenance of Well Pad -FJ-19 & Access Road (Rig Service)	<ul style="list-style-type: none"> -Clearing and Grubbing, reshaping & maintaining the Well Pad area & levelling it with good compaction Excavation of the waste pit (45m*1m*0.5m). Excavating the Anchors pits Backfilling of the waste Pit after the work was done Reshaping of the Access road & Backfilling the spots along the road. Adding new materials (Sand/Clay/Gravel) 	2018	\$4,286.50
48.	Construction of Well Pad -FK-10 & Access Road	<ul style="list-style-type: none"> Construction of development well pad type D3. -Excavating the Mud Pit with dimension (35m X 15m X 4m) & Water Pit (15mX15mX3m) Construction of Embankment (140mX110m) with an overall thickness of 0.65m to be put In three Layers Excavation of substructure (30m*30m*0.45m) Intermediate layer with an area of (140mX110m) & 0.2m thickness Construction of substructure layer (30m*30m*0.65) Construction of gravel an area layer (70m*52*0.15) m Embankment with an overall thickness of 065m to be put in 3 layers An intermediate layer of 0.2m thickness Gravel wearing course of 0.15m thickness with a mixture of 3:1 ratio. Excavation of flare pit (4m*4m*2m). - 	2018	\$234,570.63
		<ul style="list-style-type: none"> Construction of access road with top width 5m and side slop 1:2 with embankment layer 0.65 average widths 7.25m, intermediate layer 0.20m average width 6.1 GWC top width 5m. 		

No	Project Name	Nature of Work	Year	Contract Some in USD
49.	Maintenance of Well Pad -FF-27 Access Road (Rig Service)	<ul style="list-style-type: none"> -Clearing and Grubbing, reshaping & maintaining the Well Pad area & levelling it with good compaction Excavation of the waste pit (45m*1m*0.5m). Excavating the Anchors pits Backfilling of the waste Pit after the work was done Reshaping of the Access road & Backfilling the spots along the road. Adding new materials (Sand/Clay/Gravel) 	2018	\$10831.00
50.	Maintenance of Well Pad -FK-10	<ul style="list-style-type: none"> -Clearing and Grubbing, reshaping & maintaining the Well Pad arelevellinging it wiBackfillcompaction Excavation of the waste pit (45m*1m*0.5m). Excavating the Anchors pits Backfilling of the waste Pit after the work was done Reshaping of the Access road & Back fill the spots along the road. Adding new materials (Sand/Clay/Gravel) 	2018	\$1,546.50
51.	Extension of Gravel Area FK-10 Well Pad	<ul style="list-style-type: none"> -Clearance and level it and reshape it with good compaction -Extension of gravel an area 65m*20m murrum area with thickness0.15cm 	2018	\$20,406.00
52.	Maintenance Of Well Pad -PQ-25 & Access Road (Rig Service)	<ul style="list-style-type: none"> -Clearing and Grubbing, reshaping & maintaining the Well Pad area & leveling it with good compaction Excavation of the waste pit (45m*1m*0.5m). Excavating the Anchors pits Backfilling of the waste Pit after the work was done Reshaping of the Access road & Backfill the spots along the road. Adding new material levelling/Clay/Gravel) 	2018	\$11,065.50
53.	Maintenance Of Well Pad -ASD-2 & Access Road (Rig Service)	<ul style="list-style-type: none"> -Clearing and Grubbing, reshaping & maintainingBackfilling the Well Pad area & level it with good compaction Excavation of the waste pit (45m*1m*0.5m). Excavating the Anchors pits Backfilling of the waste Pit after the work was done Reshaping of the Access road & Backfilling the spots along the road. Adding new materials (Sand/Clay/Gravel) 	2018	\$14,471.00

No	Project Name	Nature of Work	Year	Contract Some in USD
54.	Modification of Well Pad -PI-28	<ul style="list-style-type: none"> -Clearing & grubbing the good pad area (140m*110m) level & reshaping it with satisfactory compaction. -Scarification and re-compaction of the gravel area (60m*50m). -Excavation of all the pits which are required (mud pit, sewage pit, flare pit) with the dimensions as shown in the layer. -Backfilling and widening of the mud pit and clearing the grass. -Cut the loose and muddy area at some part at well, pad and replace it with an intermediate layer. 	2018	\$104,640.39
55.	Clearing & Transportation	<ul style="list-style-type: none"> -Haulage of material 22km & haulage of dumping site 15mk 	2018	\$3,318.00
56.	Maintenance of LUIL N-1 to Gassab Branch Road (2.5km)	<ul style="list-style-type: none"> -Clearing and grubbing 4m on both sides of the road. -Scarification and re-compaction all section mentioned above -Construction of intermediate layer with 0.2m thickness, 7.6m top -Applying the GWC layer of 0.15m thick to the section with 7m top -install three corrugated steel pipe culverts in different locations along the Road - Gravel- sand mixture ratio is 3:1 respectively -Intermediate layer & GWC-processing by volume -Haulage distance of intermediate material is 7km maximum -Haulage distance for Murrum & Sand is 85km & 8km respectively -The side slope 1:2 	2018	\$204,768.00
57.	Maintenance of -Renk Road (Chain: 31+100km To 34+100km) No	<ul style="list-style-type: none"> -Scarification and proper re-compaction of 3km length & 12m width (from 31+100 to 34+100km) -Construction of intermediate layer with 3km length, 10.6m top width, 0.2m thickness, & soil volume conversion factor is 1:3 (from 31+100 to 34+100) -Construction of gravel wearing course layer 3km length, 7.6 bottom width, 7m top width and 0.15m thickness and soil volume conversion factor is 1.25 (from 31+100 to 34+100) -The side slope is (2H: 1V) 	2018	\$425,177.25

No	Project Name	Nature of Work	Year	Contract Some in USD
58.	Maintenance of Well Pad FG-29 & Access Road (Rig Service)	<ul style="list-style-type: none"> -Clearing and Grubbing, reshaping & maintaining the Well Pad area & level it with good compaction -Excavating the Anchors pits -Backfilling of the waste Pit after the work was done -Reshaping of the Access road & Backfilling the spots along the road. -Adding new materials (Sand/Clay/Gravel) 	2018	\$6,630.90
59	MAINTENANCE OF- RENK ROAD (CHAIN:31+100KM TO 34+100KM)	<ul style="list-style-type: none"> -Scarification & proper Re-compaction of 3km L & 12m width. -Construction of intermediate layer 3km L, 10.6 top W, 0.2m thickness & soil volume conversion factor is 1.3. -Construction of Gravel wearing course layer 3km L, 7.6m bottom W, 7m top w & 0.15m thickness & soil volume conversion factor is 1.25. -Side sloe is (2H:1V) -Marrum haulage from Adham & transportation routes will be decided at the site by the site construction engineer. -QA/QC test should be carried as per the site construction Engineer. 	Sept 2018	\$425,177.25
60	MAINTENANCE OF WELL PAD FG-29 & ACCESS ROAD (Rig service)	<ul style="list-style-type: none"> -Clearing & Grubbing, Reshaping & maintenance of goodpad & level it with satisfactory compaction. -Excavating the anchors & swage pits (45m*1m*0.5m) -Backfilling of the sewage pits after the work done -Reshaping of the Access Road & backfilling of the spots area along the road with the good compaction. -Adding new materials(sand /clay/Gravel)when requested by DPOC construction Engineer 	Sept 2018	\$ 6,630.90
61	MAINTENANCE OF Gumry -44 well pad & Its Access Road (Rig service)	<ul style="list-style-type: none"> -Cleaning & Grubbing, Reshaping & Maintaining the good pad gravel and level it with satisfactory compaction. -Excavating the waste pit (45m*1m*0.5m) -Excavating the anchors and sewage pits. -Reshaping of the Access Road and backfilling of the spots area along the road with satisfactory compaction. -Adding new materials (sand /clay/ravel) When requested by DPOC site Construction Engineer. -Backfilling of the sewage pits after the rig move 	Oct 2018	\$9,381.00

No	Project Name	Nature of Work	Year	Contract Some in USD
62	Maintenance of Zarzor- 2well pad & Its Access Road (Rig Service)	<ul style="list-style-type: none"> -Cleaning & Grubbing, Reshaping & Maintaining the good pad and level it with satisfactory compaction. -Excavating the waste pit(45m*1m*0.5m) -Excavating the anchors and sewage pits. -Reshaping of the Access Road and backfilling of the spots area along the road with satisfactory compaction. -Adding new materials (sand /clay/gravel) When requested by DPOC site Construction Engineer. -Backfilling of the sewage pits after the rig move 	Oct 2018	\$5,572.4
63	Maintenance of OGM- 10, OGM-11 & NAHAL W-2 ACCESS ROADS	<ul style="list-style-type: none"> -Clearing & grubbing all the sections mentioned above with the W of 8m each. -Scarification and re-compaction of all sections mentioned above with the width of 7m each -Applying the GWC layer of 0.15m thickness to the sections 5m top width. -Gravel-sand mixture ratio is 3:1 respectively, slopes 1:2 -Haulage distance of sand materials is 10km maximum -Haulage distance for marum 87km, 83km & 83km OGM-10, OGM-11 & Nahal NW-2 respectively. -QC/QA should be done accordingly. 	Oct 2018	\$245,096.08
64	Maintenance of well pad Nahal NW-6 & Nahal NW-5 & its Access Road (Rig service)	<ul style="list-style-type: none"> -Clearing & Grubbing, reshaping the good pad & levelling it with satisfactory compaction. -Excavating the anchor pits and waste pit. -Backfilling of the pits after the work is done. -Reshaping of the Access Road and Backfilling of potholes where necessary. -Additional new material (sand /Gravel/Clay) when it is requested by the DPOC site Engineer. 	Nov 2018	\$5,997.60
65	Maintenance of Gummy-41	<ul style="list-style-type: none"> -Clearing & Grubbing, reshaping the good pad, levelling it with satisfactory compaction. -Excavating the anchor pits and waste pit(45m*1m*.5m) -Backfilling of the pits after the work is done. -Reshaping of the Access Road and Backfilling of potholes where necessary. -Additional new material (sand /Gravel/Clay) when it is requested by the DPOC site Engineer. 	Nov 2018	\$4,202.50

No	Project Name	Nature of Work	Year	Contract Some in USD
66	Transportation of Container	<ul style="list-style-type: none"> Provide low bed transporter, the project will be paid by hours. 	Nov 2018	\$480.00
67	Maintenance of good pad Zerzor-1 & Access Road	<ul style="list-style-type: none"> -Clearing & Grubbing, reshaping the good pad, levelling it with satisfactory compaction. -Excavating the anchor pits and waste pit(45m*1m*.5m) -Backfilling of the pits after the work is done. -Reshaping of the Access Road and Backfilling of potholes where necessary. -Adding new material (sand /Gravel/Clay) when it is requested by the DPOC site Engineer. 	Dec 2018	\$1,574.00
68	Construction of ANANA W-13 Pad & Access Road	<ul style="list-style-type: none"> -Clearing & grubbing of all sites of the good pad. -Scarification & re-compaction of the site. -Excavation of substructure (30m*30m*0.45m) -Construction of Embankment (140*110m) with an overall thickness of 0.65m to be put in three layers except for substructure. -construction intermediate layer (140*110m) with 0.2m thickness for all good pads. - Construction Gravel layer with an area (60m*60m) with a thickness of 0.15m. -Excavation of all pits which are required (Mud pit, sewage pit, water pit) with the dimensions as is shown in the layout. -Backfilling & compacting of the existing borrow pits after measurement of their dimensions if required. An embankment with an overall thickness of 0.65m to put in three layers. -The intermediate layer of 0.2m thickness. -Gravel wearing course layer of 0.15m thickness, Gravel sand mixture ratios 3:1 respectively. -Average distance of haul gravel 160km, sand haulage 21 km 	Jan 2019	\$235,25.01

No	Project Name	Nature of Work	Year	Contract Some in USD
69	Maintenance of good pad FS-38 & Access Road (Rig Service)	<ul style="list-style-type: none"> -Clearing & Grubbing, reshaping the good pad, levelling it with satisfactory compaction. -Excavating the anchor pits and waste pit(45m*1m*.5m) -Backfilling of the pits after the work is done. -Reshaping of the Access Road and Backfillingthickness of the spots area along the road with the good compaction. -Adding new material (sand /Gravel/Clay) when it is requested by the DPOC site Engineer. 	Jan 2019	\$1,574.00
70	Maintenance of good pad FL-30 & Access Road (Rig Service)	<ul style="list-style-type: none"> -Clearing & Grubbing, Reshaping & maintaining the good pad area & level it with satisfactory compaction. -Excavating the anchor pits -Excavation of the waste pit(45m*1m*.5m) -Backfilling of the pits after the work is done. -Reshaping of the Access Road and Backfilling of the spots area along the road with good compaction. -Adding new material (sand /Gravel/Clay) when it is requested by DPOC site Engineer 	Mar 2019	\$776.00
71	Maintenance of good pad FF-22 & Access Road (Rig Service)	<ul style="list-style-type: none"> -Clearing & Grubbing, reshaping & maintaining the good pad, level it with satisfactory compaction. -Excavating the anchor pits and waste pit(45m*1m*.5m) -Excavation of the waste pit (45m*1m*0.5m) -Reshaping of the Access Road and Backfilling of the spots area along the road with good compaction. -Adding new material (sand /Gravel/Clay) when it is requested by the DPOC site Engineer. -Backfilling of the waste pit after the rig move. 	Mar 2019	\$1,115.00
72	Maintenance of good pad FL-29 & Access Road (Rig Service)	<ul style="list-style-type: none"> -Clearing & Grubbing, Reshaping & maintaining the good pad area, level it with satisfactory compaction. -Excavation of the waste pit(45m*1m*.5m) -Excavation of the anchor pits. -Reshaping of the Access Road and backfilling of the spots area along the road with compaction. -Adding new material (sand /Gravel/Clay) when it is requested by the DPOC site Engineer. -Backfilling of the waste pit after the rig move. 	Mar 2019	\$735.00

No	Project Name	Nature of Work	Year	Contract Some in USD
73	Maintenance of well pad Ashbal -2 & Access Road (Rig Service)	<ul style="list-style-type: none"> -Clear well pad from the Grass, level it & reshape it with good compaction. -Excavating the anchor and sewage pits. -Backfilling of the sewage pits after the work is done. -The reshaping of the access road and backfilling of the spots area along the road with good compaction. -Adding new materials (sand /clay/Gravel) when requested by the site Construction Engineer. -Adding new materials (sand/Clay/Gravel) when requested by the site construction Engineer. 	Apr 2019	\$1,213.50
74	Renk Road chain:70+000km to 76+000km	<ul style="list-style-type: none"> -Scarification & re-compaction of the existing carriageway -Haulage for gravel wearing material from Atham -processing of gravel wearing material course 	May 2019	\$492,034.5
75	Maintenance of well pad FG-17	<ul style="list-style-type: none"> Maintenance of well pad FG-17 and its Access Road (Rig service) 	JULY 2019	\$15,076.00
76	Maintenance of well pad Anbar-5	<ul style="list-style-type: none"> Maintenance of well pad Anbar-5 Access Road 	July 2019	\$43,111.60
77	Maintenance of well pad HML-14	<ul style="list-style-type: none"> Maintenance of well pad HML-14 Access Road (Rig Service) 	August 2019	\$13,176.50
78	Maintenance of ASSEL-14	<ul style="list-style-type: none"> Maintenance of ASSEL-14 (Access Road) 	August 2019	\$15,032.00
79	Maintenance of FL-29 Well pad	<ul style="list-style-type: none"> Maintenance of FL-29 Well pad 	September 2019	\$10,807.30
80	Provision of Security Container Pad	<ul style="list-style-type: none"> Provision of Security Container Pad inside PFPF Dyke 	November 2019	\$24,889.55
81	Maintenance of Well Pad FK-27H	<ul style="list-style-type: none"> Maintenance of Well Pad FK-27H & Access Road (Rig Service) 	November 2019	\$1,548.01

No	Project Name	Nature of Work	Year	Contract Some in USD
82	Construction of pal S-15	<ul style="list-style-type: none"> Construction of pal S-15, Well pad and Access Road 	Janu. 2020	\$204,970.98
83	Maintenance of Well pad Assel13	<ul style="list-style-type: none"> Maintenance of Well pad Assel13 and its Access Road (Rig Service) 	Janu. 2020	\$342.00
84	Maintenance of Well pad pal-S-3	<ul style="list-style-type: none"> Maintenance of Well pad pal-S-3 & Access road (Rig Service) 	Janu. 2020	\$2,086.28
85	Maintenance of well pad FP - 30	<ul style="list-style-type: none"> Maintenance of well pad FP - 30 & its access road (Rig Service) 	Feb. 2020	\$1,505.48
86	Provision of Security Container Pad	<ul style="list-style-type: none"> Provision of Security Container Pad inside FPF Dyke of GUMMRY 	Feb. 2020	\$1,422.93
87	Maintenance of Water Filling Station	<ul style="list-style-type: none"> Maintenance of Water Filling Station 	Feb. 2020	\$19,857.74
88	Maintenance of well pad FG	<ul style="list-style-type: none"> Maintenance of well pad FG - 129 & its access road 	Feb. 2020	\$342.00
89	Maintenance of well pad FE - 35	<ul style="list-style-type: none"> Maintenance of well pad FE - 35 & its access road 	MARCH 2020	\$836.00
90	Maintenance of well pad FE - 31	<ul style="list-style-type: none"> Maintenance of well pad FE - 31 & its access road (Rig Service) 	April 2020	\$256.50
91	Maintenance of well pad FL - 25	<ul style="list-style-type: none"> Maintenance of well pad FL - 25 & its access road 	April 2020	\$1,119.10
92	Construction of PO-30 Well Pad	<ul style="list-style-type: none"> Construction of PO-30 Well Pad & Access Road 	April 2020	\$223,054.14
92	Construction of PO-30 Well Pad	<ul style="list-style-type: none"> Construction of PO-30 Well Pad & Access Road 	April 2020	\$223,054.14

No	Project Name	Nature of Work	Year	Contract Some in USD
93	Maintenance of Guelguk -Mangok road	<ul style="list-style-type: none"> Construction of Guelguk-Mangok Road chain:28+000M TO 32+300KM(4.3KM) 	August 2020	\$846,001.70
94	Maintenance of Well PadFL-30	<ul style="list-style-type: none"> Maintenance of Well Pad FL-30 &Its Access Road (Rig service) 	October 2020	\$4,708.05
95	Maintenance of Well Pad FJ-27& its Access Road (Rig service)	<ul style="list-style-type: none"> Maintenance of Well Pad FJ-27& its Access Road (Rig service) 	October 2020	\$12,812.70
96	Maintenance of Well Pad FI-24	<ul style="list-style-type: none"> Maintenance of Well PAD FI-24& its Access Road (Rig service) 	October 2020	\$3,172.90
97	Maintenance of Palouch -Renk Road	<ul style="list-style-type: none"> Maintenance of Palouch -Renk Road (Chain :19 +500 Km to 22+000KM) 	October 2020	\$326,637.25
98	Maintenance of KOHR ADAR ROAD	<ul style="list-style-type: none"> Maintenance of Khor Adar from Adar Main Road to Khor Adar Bridge (Chain:08+200KM to 18+200 KM) 	November 2020	\$75,566.92
99	Maintenance of Well Pad FP-28	<ul style="list-style-type: none"> Maintenance of Well Pad FP & Access Road (Rig Service) 	February 2021	\$1,204.60
100	Construction of PV-27 Well Pad	<ul style="list-style-type: none"> Construction of PV-27 Well Pad & Its Access Road 	February 2021	\$278,245.99
101	Maintenance of Well pad FS-37 & ITS Access Road	<ul style="list-style-type: none"> Maintenance of Well pad FS-37 & ITS Access Road 	March,2021	\$1,119.10
102	Maintenance of Well pad & Access Road	<ul style="list-style-type: none"> Maintenance of Well pad Teng SE-7 & ITS Access Road 	March,2021	\$1,020.30
103	Maintenance of Well pad FG-17 & ACCESS ROAD (RIG SERVICE)	<ul style="list-style-type: none"> Maintenance of Well pad FG-17 & ACCESS ROAD (RIG SERVICE) 	May,2021	\$4,998.66
104	Maintenance Of Well Pad HAMMAL-23 & ACCESS ROAD (RIG SERVICE)	<ul style="list-style-type: none"> Maintenance Of Well Pad HAMMAL-23 & ACCESS ROAD (RIG SERVICE) 	February 2021	\$1,856.30

No	Project Name	Nature of Work	Year	Contract Some in USD
105	Maintenance Of Well Pad FH-30 & ACCESS ROAD (RIG SERVICE)	• Maintenance Of Well Pad FH-30 & ACCESS ROAD (RIG SERVICE)	February 2021	\$9,430.74
106	Maintenance Of Wellpad PI-23h & Access Road	• Maintenance Of Wellpad PI-23h & Access Road	June 2021	\$1,666.75
107	Construction Of Traces And Flood Protection & Culvert Installation Around Well Pad Fd-26 ,Fe -25,Fi-27 H & Pv-27	• Construction Of Traces And Flood Protection & Culvert Installation Around Well Pad Fd-26 ,Fe -25,Fi-27 H & Pv-27	June 2021	\$13,582.23
108	Construction Of Fj-126 Well Pad and Its Access Road	• Construction Of Fj-126 Well Pad and Its Access Road	July 2021	\$256,161.10
109	Maintenance Of Wellpad Fs-42 And Its Access Road	• Maintenance Of Wellpad Fs-42 And Its Access Road	August 2021	\$8,514.10
110	Maintenance Of Wellpad Luil-12 And Its Access Road	• Maintenance Of Wellpad Luil-12 And Its Access Road	October 2021	\$2,898.89
111	Maintenance Of Well pad Gassab-39 And Its Access Road	• Maintenance Of Well pad Gassab-39 And Its Access Road	October 2021	\$10,226.88
112	Maintenance Of Wellpad Ah-32 And Its Access Road	• Maintenance Of Wellpad Ah-32 And Its Access Road	October 2021	\$1,765.55
113	Maintenance Of Wellpad Jumeza-3 And Its Access Road	• Maintenance Of Wellpad Jumeza-3 And Its Access Road	October 2021	\$10,519.13
114	Maintenance Of Well pad Gassab N-2 And Its Access Road	• Maintenance Of Wellpad Gassab N-2 And Its Access Road	October 2021	\$3,522.97



CANAAN
CONSTRUCTION

Canaan Construction Company
Airport Road, Opp. Skyline
Juba - South Sudan

Telephone

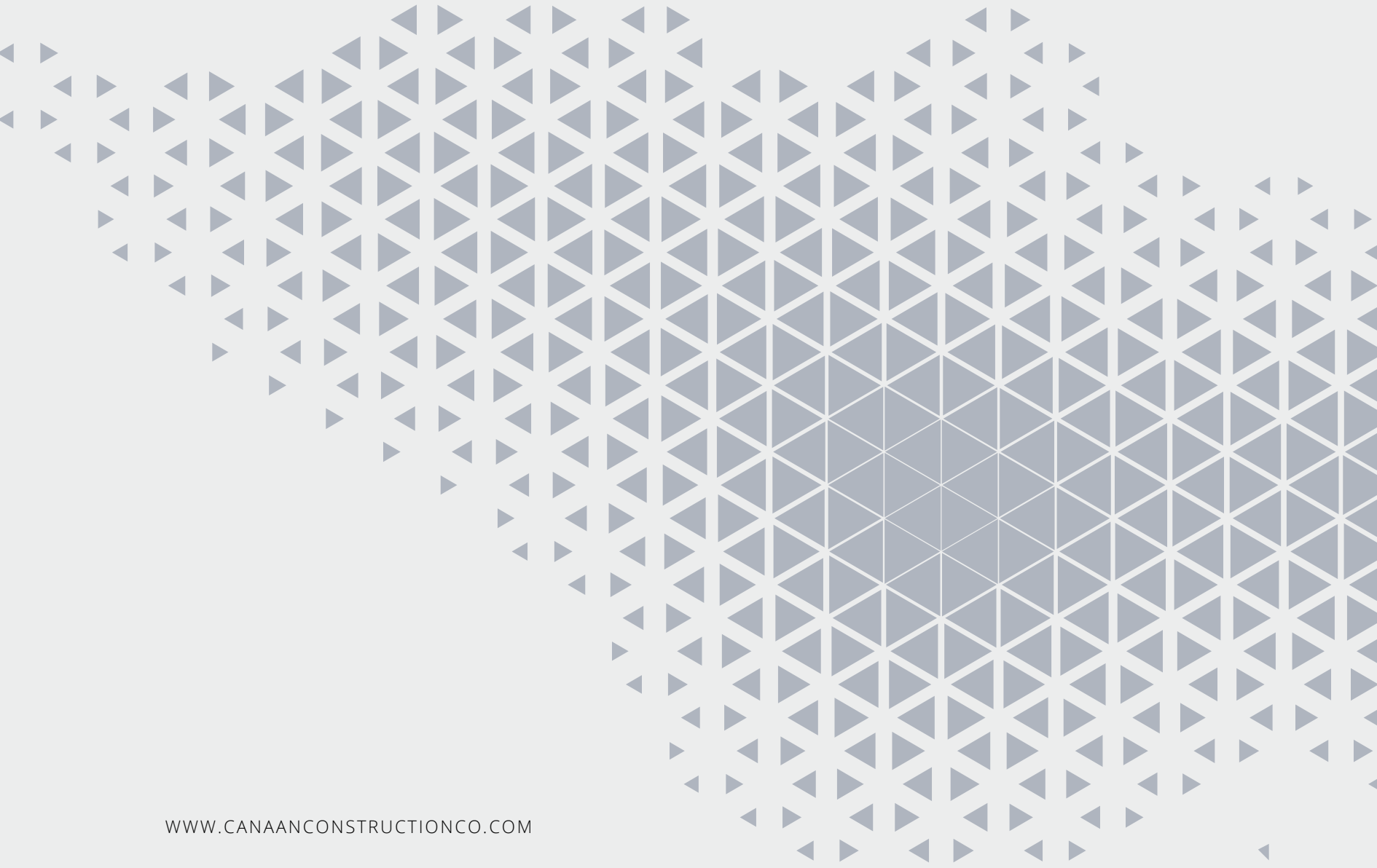
+211926097340
+211922472632
+211928607286

Email

info@canaanconstructionco.com
ccc.southsudan@yahoo.com

Web

www.canaanconstructionco.com



WWW.CANAANCONSTRUCTIONCO.COM